



HAWRIDGE & CHOLESBURY CHURCH OF ENGLAND SCHOOL PSA

HAWRIDGE & CHOLESBURY PSA

Thank you so much, parents and carers! The PSA charity successfully raised £7400 for the school in 2024-2025. Every bit of your contribution, big or small, really counts. Whether it's your insights, enthusiasm, time, connections, or resources, it supports the school in offering the best for our kids.

THE PSA PURCHASED IN 2024/25

x18 Surface Pro Chargers
EYFS / KS1 Phonics Resources
Glockenspiels
Visualisers
Summerhouse for Cosy Corner
Commemorative 150 years Mosaic
Sand Table
Cosy Corner Play Equipment

THE PSA WILL BE FUNDRAISING FOR IN 2025/26

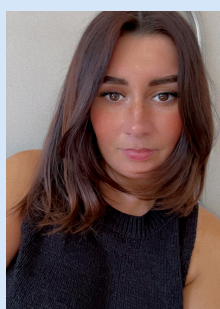
New Chromebooks for the ICT suite
KS2 Freshstart Phonics resources
New Playground Markings
Outside Storage for KS1

PLUS MORE!

MEET THE TEAM!



CHAIR
Naomi Symonds



VICE CHAIR
Cat Gray



TREASURER
Lisa Rolfe



SECRETARY
Kim Allchin

PSA EVENTS

Announcement

Christmas Disco
Friday 28th November

Christmas Float
(Rotary Club)
Sunday 7th December

Christmas Fair
Friday 12th December

Parents Bingo Night
Feb 2026 (Date TBC)

JOIN THE WHATSAPP GROUP!



As the Parents School Association (PSA) for Hawridge & Cholesbury School our aim is to promote a positive and inclusive school community by organising fun and engaging events whilst raising valuable funds which support the extras that enhance our children's learning.

*Do you have a skill you can offer the PSA?
Are you a builder, carpenter, gardener, painter?
Can you sew or create great posters?
Are you great at marketing?
Please get in touch!
We would love to have you aboard!*

hawridgepsa@hotmail.com

Join us on Facebook



<https://www.facebook.com/share/g/19pcwgcCd/?mibextid=wwXlfr>