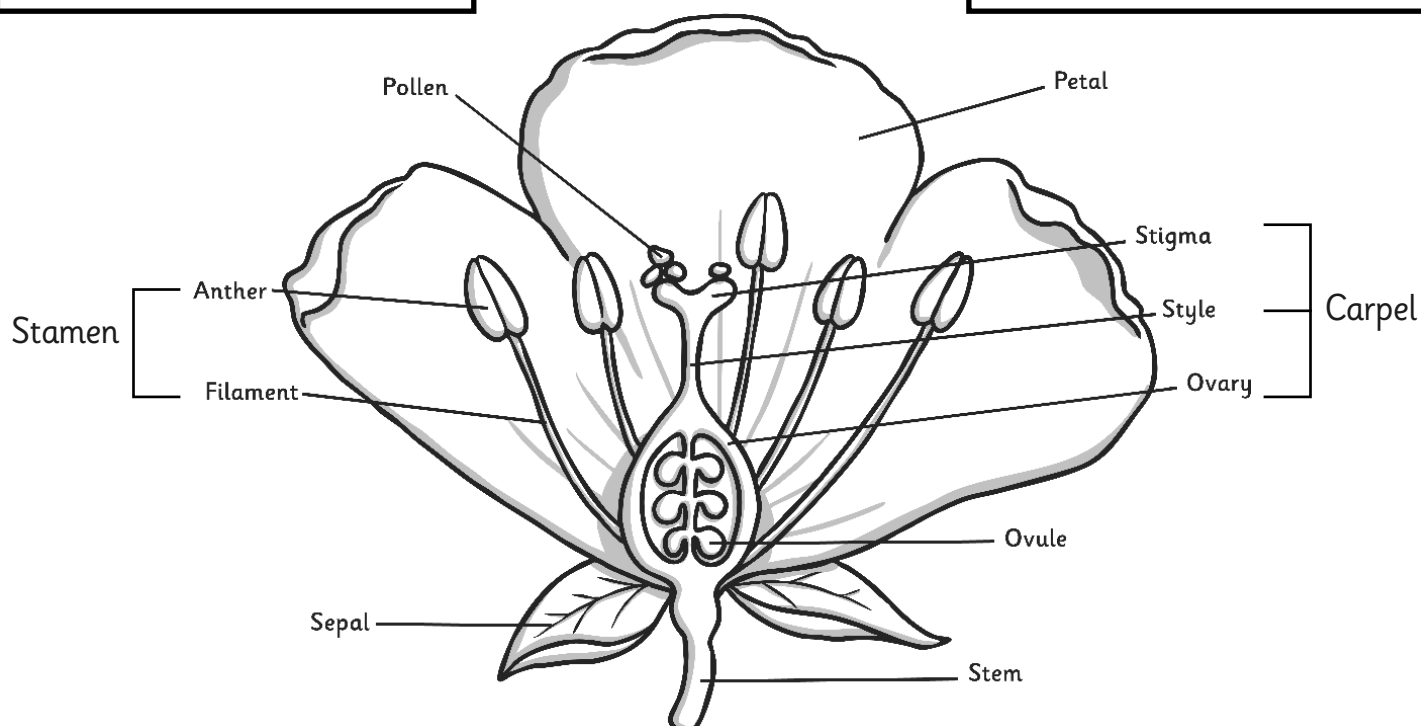
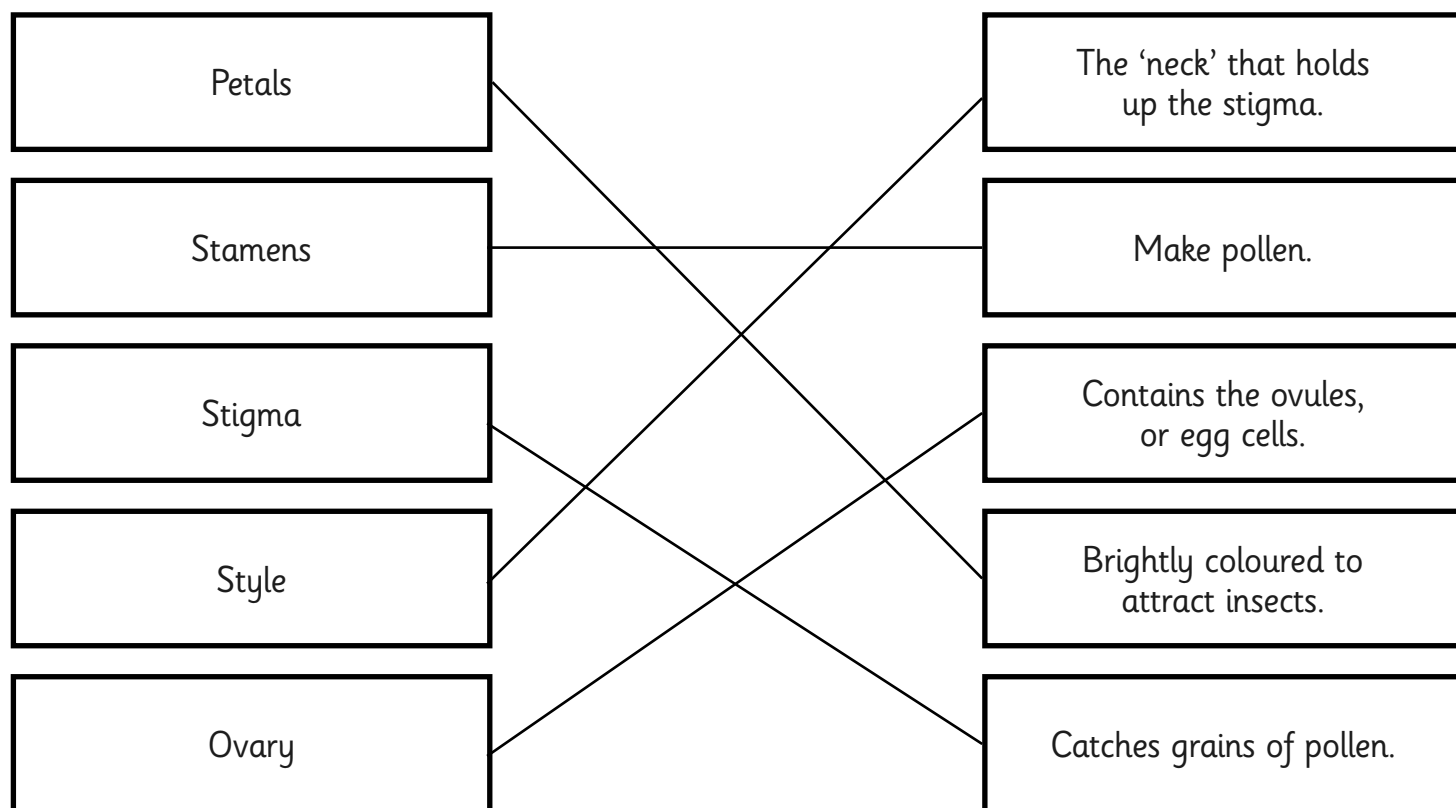




Parts of a Flower **Answers**



Can you match the parts of a flower to the job they do?



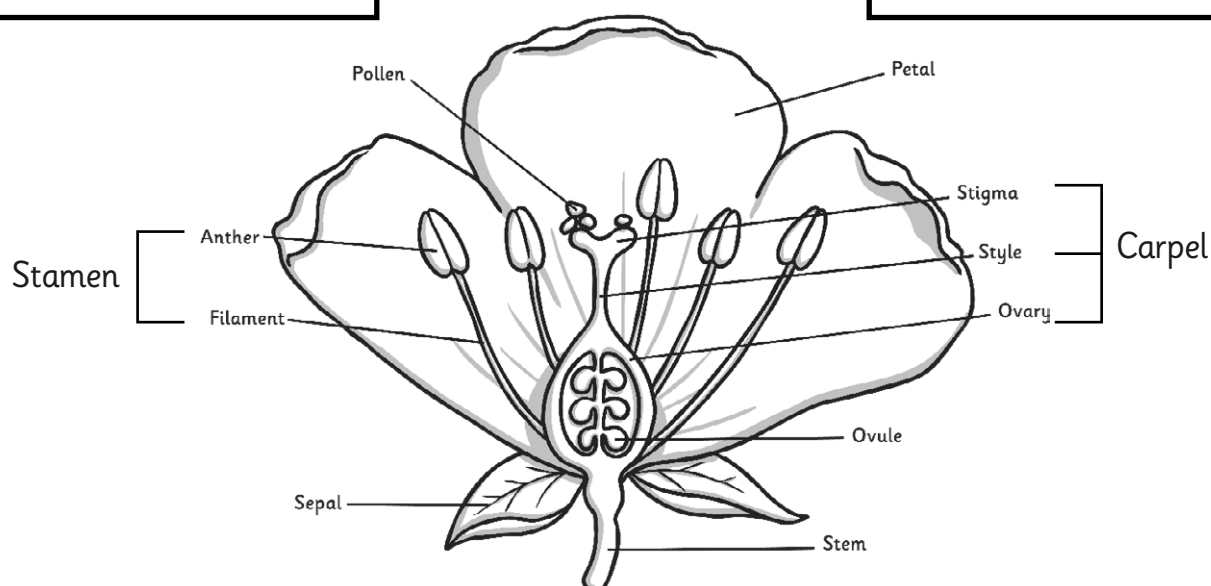


Parts of a Flower **Answers**



Can you match the parts of a flower to the job they do?

Petals	The 'neck' that holds up the stigma.
Stamens	Holds up the anther.
Stigma	Contains the pollen.
Style	Brightly coloured to attract insects.
Ovary	Catches grains of pollen.
Anther	Contains the ovules.
Filament	Has two parts: the anther and the filament.





Parts of a Flower **Answers**



Can you match the parts of a flower to the job they do? Three of the flower parts don't have an explanation. Work out which ones are missing then add your own explanations in the blank boxes. Lastly, match your explanations to the correct flower part.

Petals		The 'neck' that holds up the stigma.
Stamens		Holds up the anther.
Stigma		Catches the pollen.
Style		Brightly coloured to attract insects.
Ovary		Catches grains of pollen.
Anther		Contains the ovules.
Filament		Has two parts: the anther and the filament.

